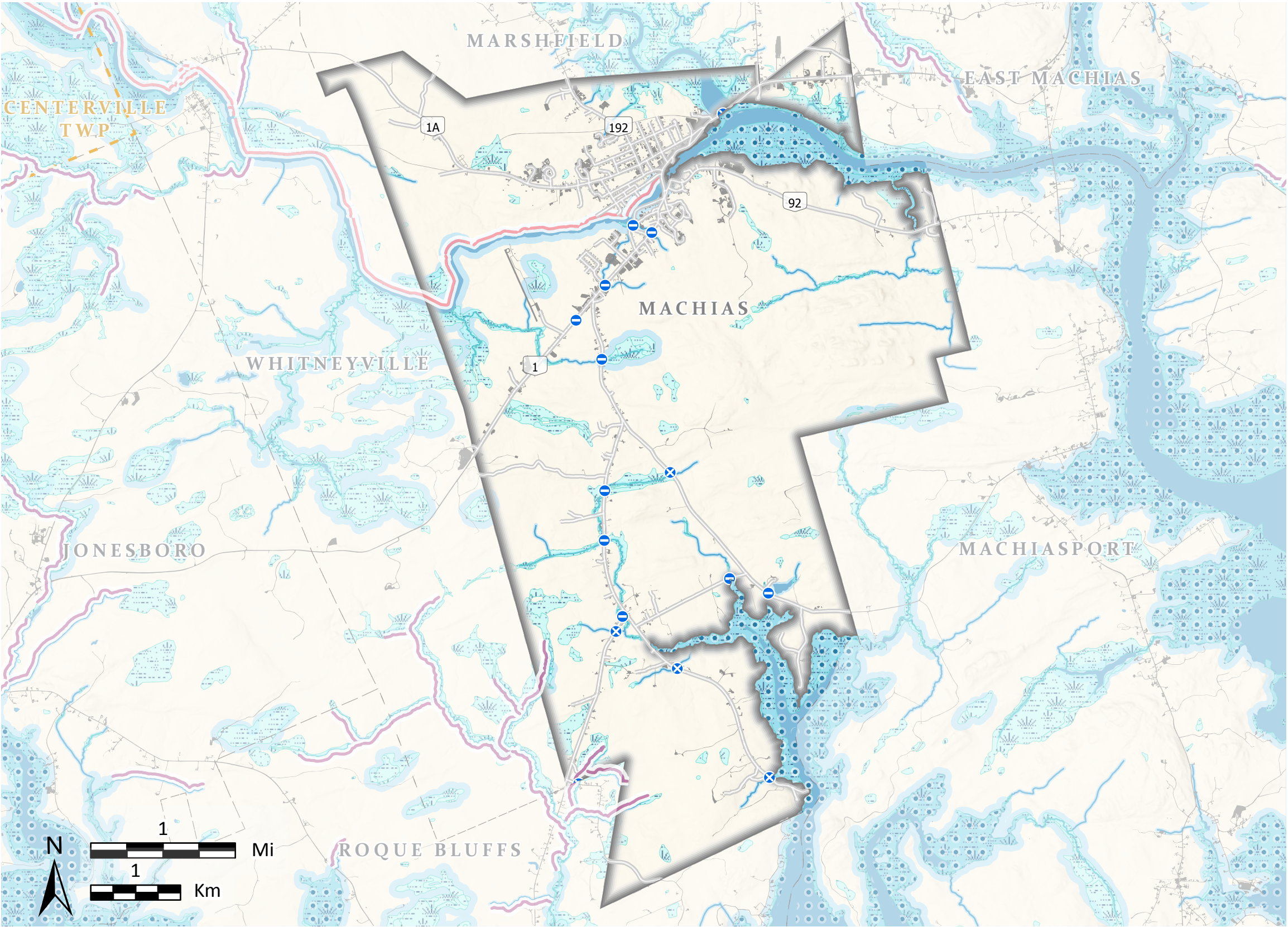


Machias

Water Resources and Shoreland Habitats



This map is nonregulatory and is intended for planning purposes only

- Organized Towns**
- Unorganized Towns**
- Maine Stream Habitat Viewer Road Stream Crossings**
 - Barrier**
 - Potential Barrier**
 - *Crossings on private roads not shown.
- Atlantic Salmon Habitat**
- Wild Brook Trout Priority Conservation Areas**
- Shellfish Growing Areas**
- Wetlands**
- Shoreland Areas**
- Developed**

Find crossing details on the Stream Viewer - beginningwithhabitat.org/maps

Reflects surveys on selected Maine streams.

Reflects surveys on selected Maine streams.

Distributions of molluscan shellfish species.

National Wetlands Inventory (NWI) uses aerial photographs to approximate wetland locations. NWI data typically under represents the presence of wetlands on the landscape.

Areas are delineated by ME Dep. of Environmental Protection's Mandatory Shoreland Zoning Act, which includes areas within 250 feet of great ponds, rivers, and wetlands, and within 75 feet of streams. The regulations within each shoreland zone depends on the town, and towns may regulate greater areas than what is shown here. For more information, please visit: <https://www.maine.gov/dep/land/slz/>

Impervious surfaces including buildings and roads.

TOWNSHIP BOUNDARIES - Maine Office of GIS (2020)
ROADS - ME Office of GIS, ME Dept of Transportation (2021)
HYDROLOGY - USGS National Hydrography Dataset (2016)
DEVELOPED - CCAP NOAA impervious land cover (2022)
NATIONAL WETLANDS INVENTORY - U.S. Fish & Wildlife Service (2020)
SHORELAND AREAS - ME Office of GIS, ME Natural Areas Pgm(2011)

BROOK TROUT PRIORITY CONSERVATION AREAS - ME Dept of Inland Fisheries & Wildlife (2020)
MAINE HERITAGE FISH WATERS - ME Dept of Inland Fisheries & Wildlife (2022)
ATLANTIC SALMON HABITAT - ME Dept of Marine Resources (2024)
SHELLFISH - ME Dept of Marine Resources (2010)
ME ROAD STREAM HABITAT CROSSINGS - ME Dept of Inland Fisheries & Wildlife, US Fish and Wildlife Service (2022)